

## RE-DWELL An innovative training network

The aim of RE-DWELL is to create a transdisciplinary research framework which encompasses the various disciplines, sectors and stakeholders involved in the provision of affordable and sustainable housing.

The research projects carried out by the Early-Stage Researchers (ESRs) working within this framework will reveal the links between social, economic and environmental factors in the provision of affordable and sustainable housing.

Their research projects will interlink three key areas underpinning affordable and sustainable housing:

- Design, planning and building
- Community participation
- Policy and financing

## RE-DWELL in a nutshell

- ✓ A consortium of 22 organizations covering a range of academic disciplines and professional fields working on housing.
- ✓ A comprehensive training programme, with network specific courses complemented with training in the PhD programmes of the host universities.
- ✓ A blended learning environment to integrate onsite and online activities distributed across institutions.
- ✓ Active knowledge exchanges to be held in three workshops in Lisbon, Budapest and Zagreb; in three summer schools in Nicosia, Valencia and Reading; and in two international conferences in Grenoble and Barcelona.
- ✓ A wide range of outreach activities to engage communities and professional organizations in the research activities and in the exploitation of their outputs.

15 Early Stage Researchers (ESRs) are currently carrying out their doctoral studies in a wide range of fields such as architecture, economics, urban planning, sociology and social policy. As part of the programme, they are undertaking secondments in organisations including housing associations, public/private housing developers, construction companies and local authorities.

Researchers trained in this programme will develop the capacity to act across different fields and sectors to provide innovative solutions for the housing problems which are increasingly affecting society.



[info@re-dwell.eu](mailto:info@re-dwell.eu)

The consortium consists of 10 academic institutions and 12 partner organisations representing 9 countries: Belgium, Croatia, Cyprus, France, Hungary, Netherlands, Portugal, Spain and United Kingdom.

The activities of the network started on 1 October 2020 and will last for four years.



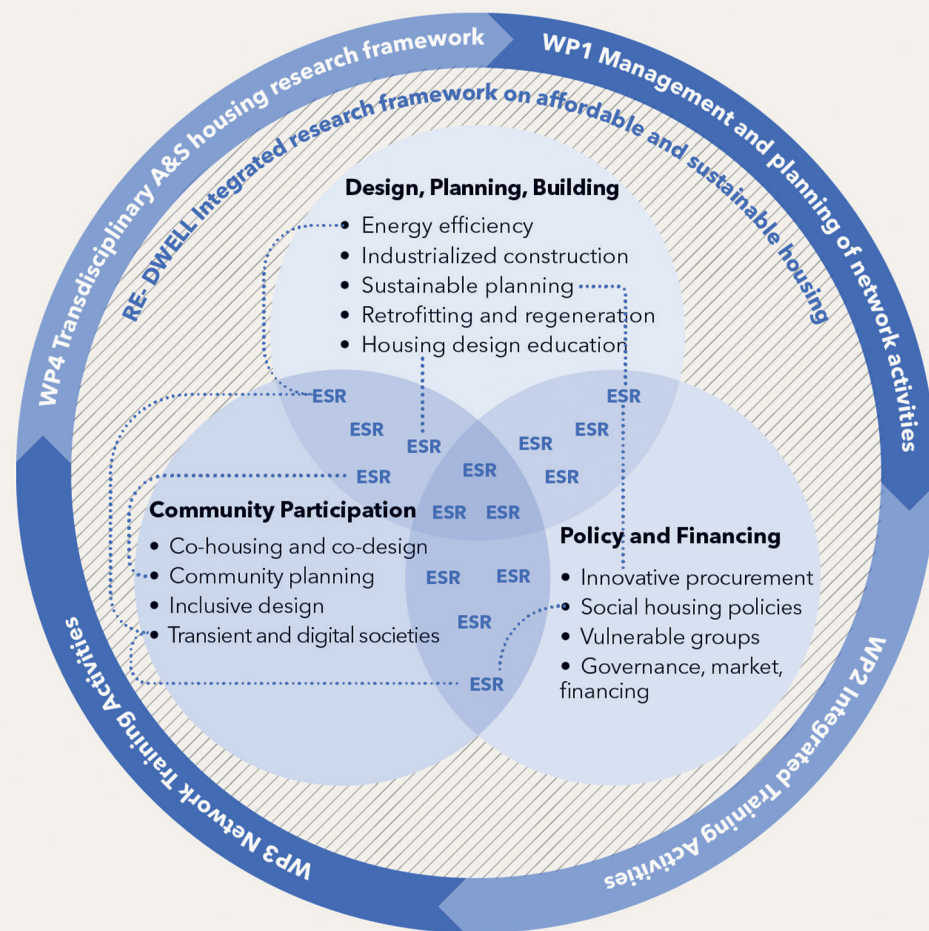
## Delivering affordable and sustainable housing in Europe

[www.re-dwell.eu](http://www.re-dwell.eu)



This project has received funding from the European Union's Horizon 2020 research and innovation programme under the Marie Skłodowska-Curie grant agreement No 956082

The work programme consists of three work packages devoted to planning, design and delivery of training and networking activities (WP1, WP2, WP3), and one dedicated to design and implementation of a novel transdisciplinary research framework for affordable and sustainable housing (WP4).



## Higher education institutions:

- School of Architecture La Salle, Ramon Llull University, Spain (Project Coordinator)
- Pacte - Laboratoire de sciences sociales, Université Grenoble Alpes, France
- Sheffield School of Architecture (SSoA), University of Sheffield, United Kingdom
- Institute for Social Policy-ISP, University of Zagreb, Croatia
- Institute for Sociology, Centre for Social Sciences, Hungarian Academy of Sciences Centre of Excellence, Hungary
- Department of Architecture, University of Cyprus, Cyprus
- School of Architecture, Universitat Politècnica de València, Spain
- Faculty of Architecture and the Built Environment (ABE), TU Delft, Netherlands
- School of Technology and Architecture, University Institute of Lisbon (ISCTE), Portugal
- School of Built Environment, University of Reading, United Kingdom

## Partner organizations:

- Lisbon City Council, Portugal
- Sustainable Towns, Spain
- Budapesti Módszertani Szociális Központ, Hungary
- Ceraneo, Croatia
- Institut Català del Sòl, Spain
- Clarion Housing Group, United Kingdom
- Casais, Portugal
- Cyprus Land Development Corporation, Cyprus
- South Yorkshire Housing Association Ltd., United Kingdom
- European Federation for Living, Netherlands
- Housing Europe, Belgium
- Városkutatás Kft, Hungary