

From creator to enabler

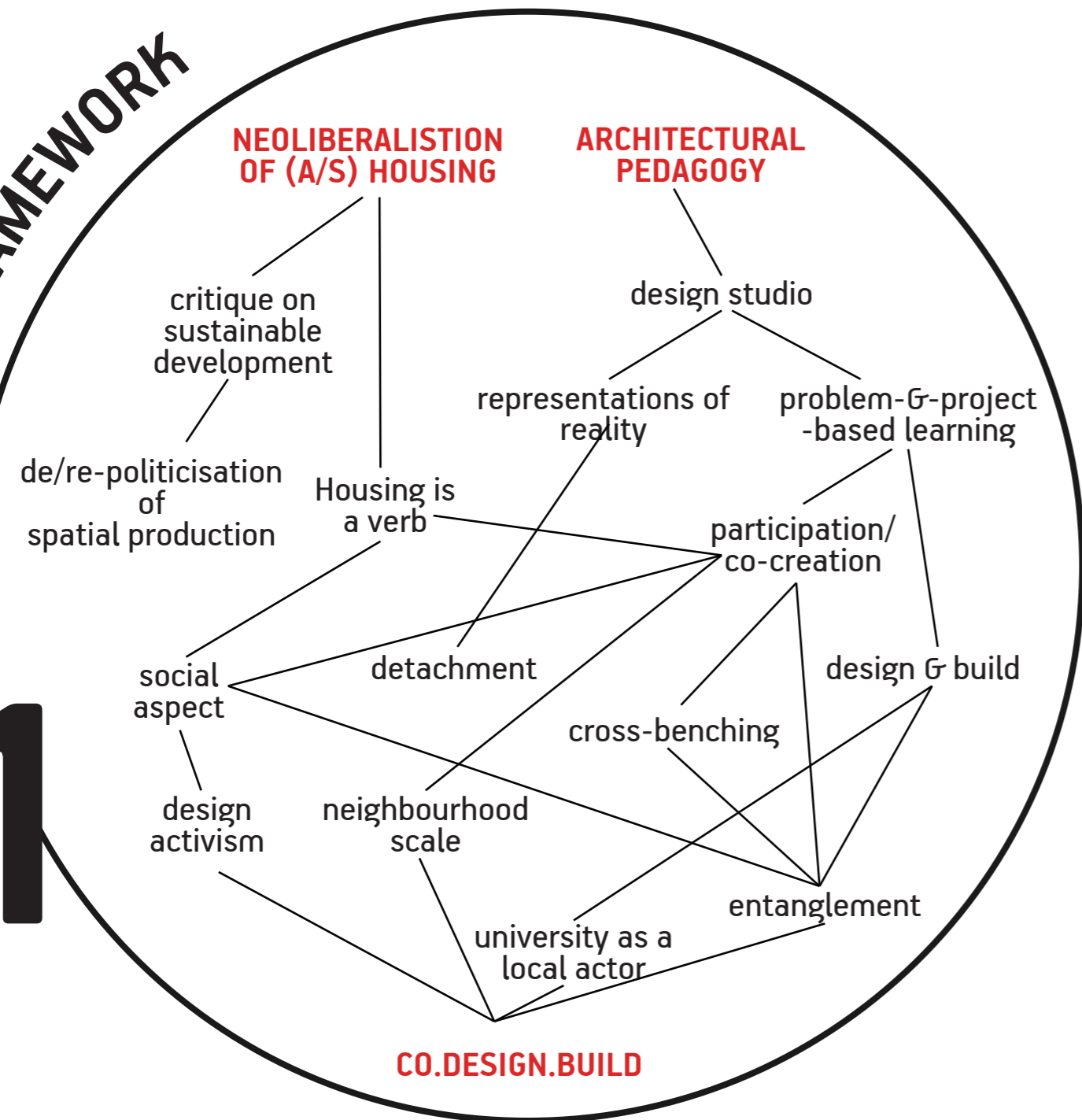
The underpinnings and implications of the co.design.build studio

Supervisor:
Nadia Charambous

ESR9: Effrosyni Roussou
University of Cyprus

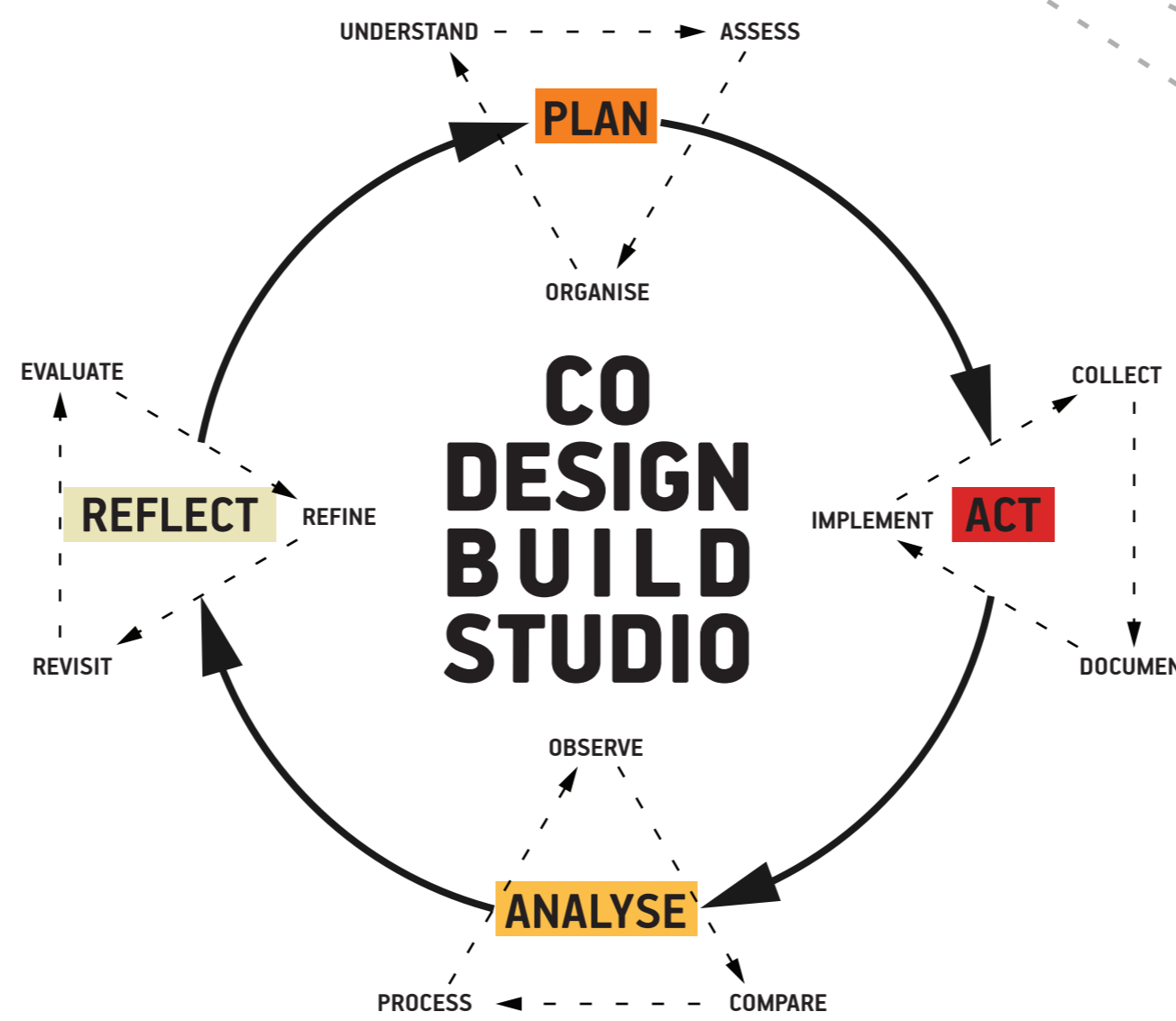
Co-supervisors:
Carla Sentieri, Andreas Savvides

1 THEORETICAL FRAMEWORK



2 RESEARCH QUESTIONS

- 1 What are the **underpinnings** and **pedagogical impact** of an effective, engaging and impactful **transdisciplinary studio** that combines critical **co-creation methodologies** with a **design and build learning environment** (co.design.build)?
- 2 How can such a studio become an **important actor** with(in) a more **radical understanding** of affordable and sustainable housing systems/networks especially in the context of the **European South**?



UNDERSTANDING THE CONTEXT:
BUILDING WORKSHOP
SUMMER '22
University of Cyprus

WHAT
A 3-week workshop where 2nd year students, together with local residents, will create (from design to construction) a small public space in a neighbourhood in Latsiá, Nicosia.

WHY
-Understand the Cypriot context.
-Start building a network of local actors.
-Test and -hopefully- prove that this is a beneficial model of spatial intervention for all parties involved.

SECONDMENT #1
UNIVERSITAT POLITÈCNICA DE VALÈNCIA

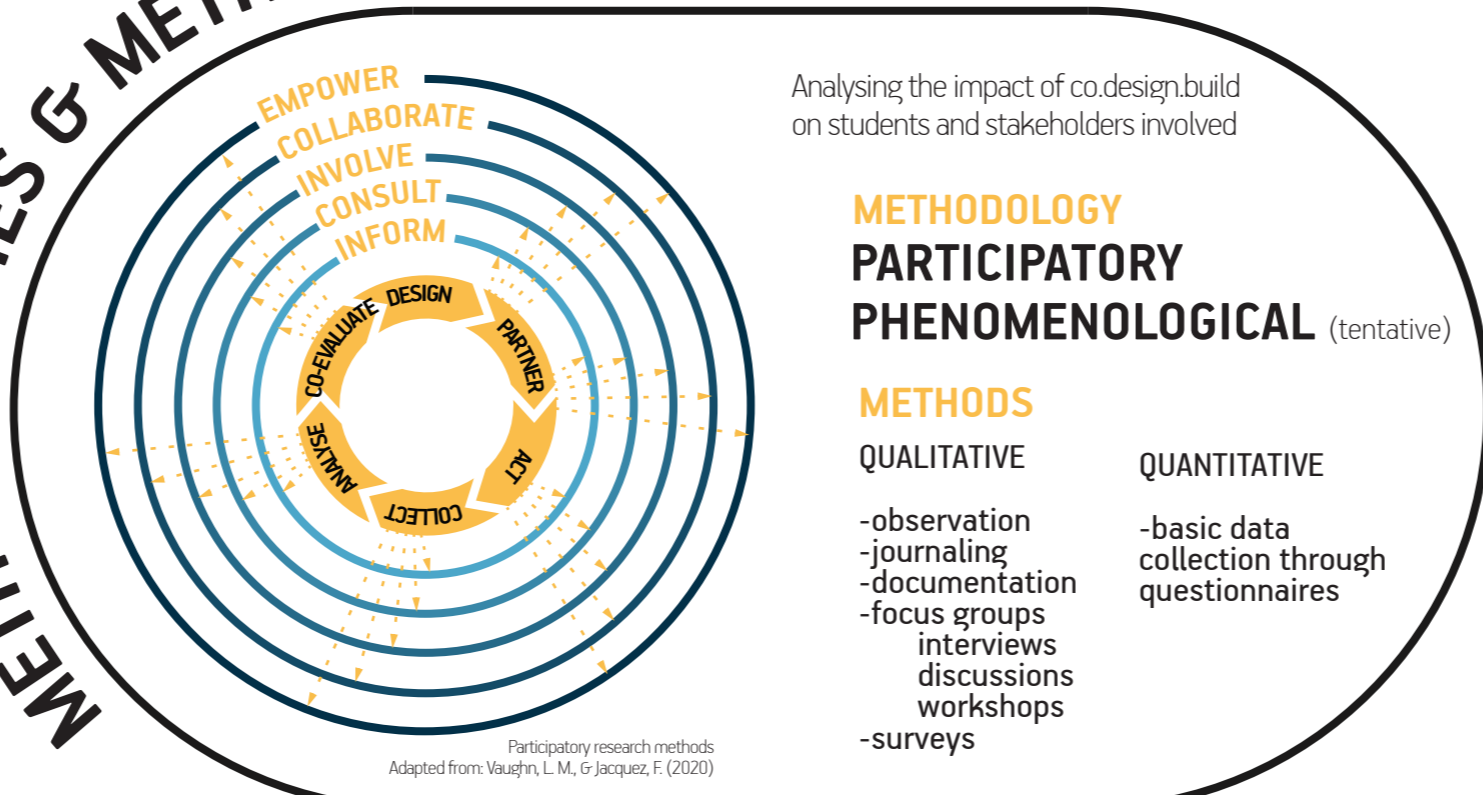
AIM
-Study, analyse and document participatory & co-creation methodologies adopted by UPV.
-Inform own methodological framework.

SECONDMENT #2
KOAT

AIM
-Get familiar with CLDC housing design & provision processes.
-Lay the foundation for a future cooperation between CLDC & UCY in co.design.build projects.



3 METHODOLOGIES & METHODS



#1 PILOT STUDIO
University of Cyprus
CHALMERS

WHAT (TENTATIVE)
Scenario 1: parallel running of two similarly structured studios with common objectives and possibly common hands-on project(s).
Scenario 2: visit Chalmers, follow, monitor and document the already established "DARE to Build" course, and inform own methodology for a UCY equivalent.

WHY
- Gain insights on already applied & established practices in participatory & design-build processes in education in a northern European context.
- Explore & contemplate on their applicability and interpretation on a southern European context.

#2 TESTBED STUDIO
University of Cyprus

WHAT
Based on the analysis and input from previous experiences, this will be the first official run of co.design.build as a stand-alone studio.

WHY
-Test the proposed studio structure
-Acquire data, analyse and co-evaluate the outcomes with all parties involved

