



Aya Elghandour

B3 - Sheffield School of Architecture (SSoA), University of Sheffield

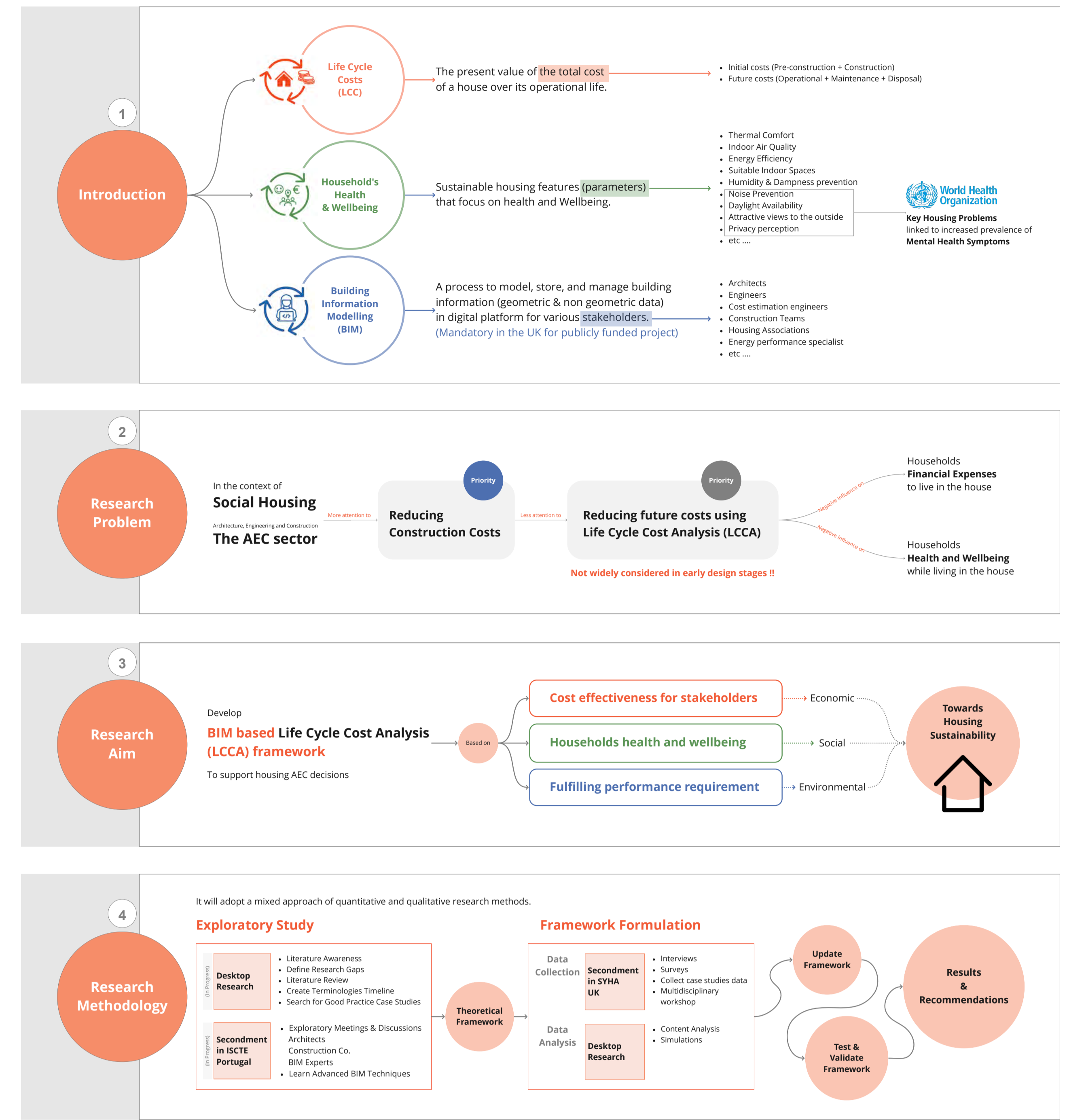
Supervising team

Karim Hadjri (Supervisor)
Krzysztof Nawratek (Co-Supervisor)
Vasco Moreira Rato (Co-Supervisor)

ESR 4

An integrated life cycle costing framework for households' health and wellbeing

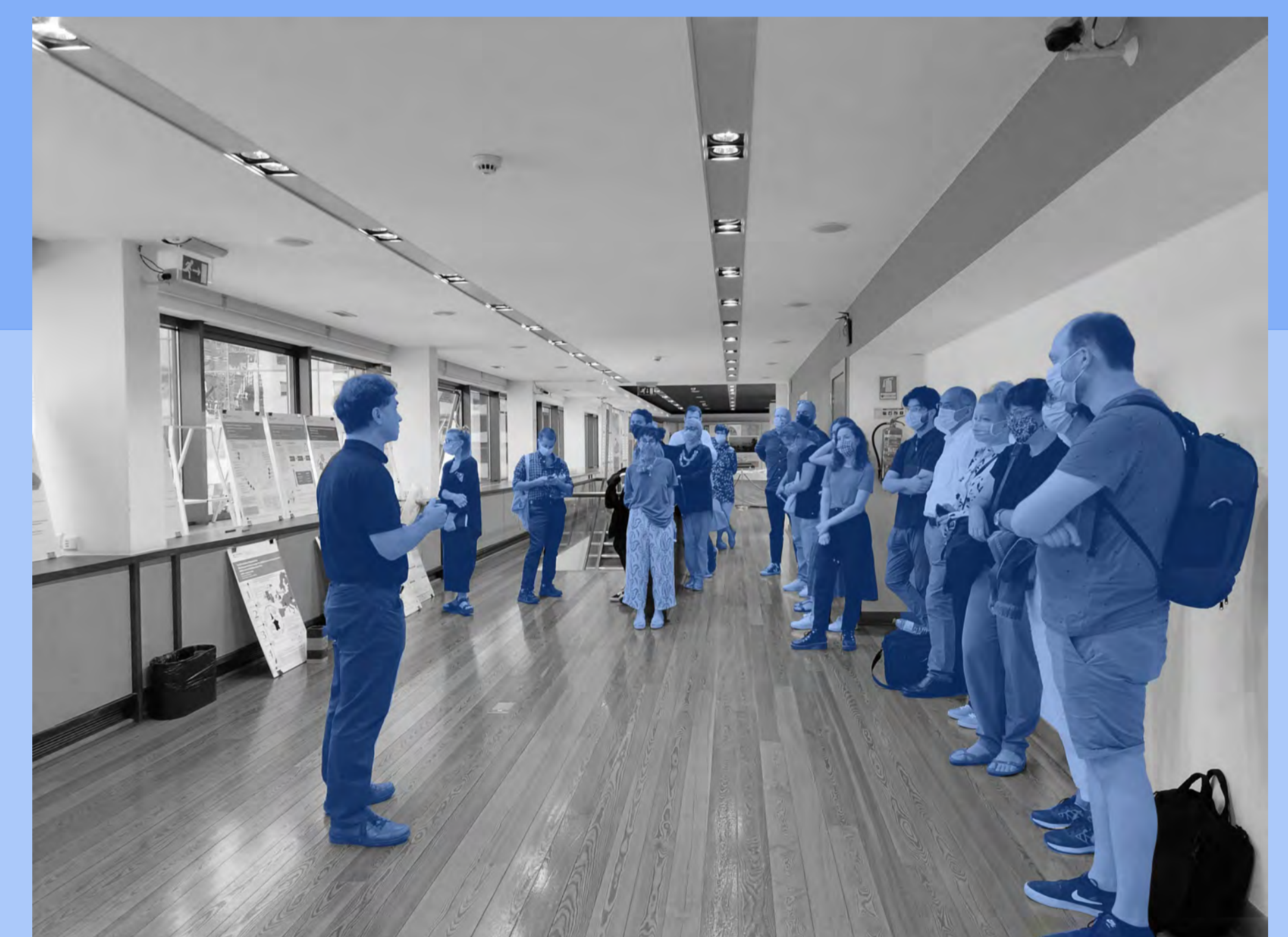
The provision of affordable housing is already a public issue, referred to by many as a 'crisis'. Within such a challenging situation, Considering the provision of housing as a determinant of households' health and economic wellbeing is a complex matter. Moreover, the impact of the Covid 19 pandemic has highlighted the link between the heady issues of housing affordability and poor health and wellbeing. As a contribution to addressing these pressing complexities, this research aims to develop a BIM-based affordable housing design framework that puts the health and wellbeing of residents at the forefront of AEC decision-making. This framework will incorporate life-cycle costing to find cost-effective solutions for housing associations and households while meeting building performance requirements.



LISBON · WORKSHOP LISBON · WORKSHOP LISBON · WORKSHOP LISBON · WORKSHOP LISBON

“Field visits and guided tours make a research project come alive and inspire you in ways that scientific articles are not capable of. But first and foremost, conversations with practitioners, policymakers and in-house researchers can help ESRs to design their methodology in a way that could truly address societal challenges.”

GROUP DISCUSSIONS



“It is a global issue. For instance, in Europe, there are more than 30 million slum dwellers. No one can deny the urgency of the various efforts and strategies used to tackle this issue or to upgrade substandard areas to incorporate their communities in the city gradually. But before doing so, it is important to listen! And to bear in mind an inclusive and participatory approach to tackle this.”

Vocabulary

Terms and definitions on affordable and sustainable housing

BIM

Area: Design, planning and building

Building Information Modelling (BIM) is the process of creating a set of digital representations which consists of both graphical and non-graphical data for the entire building cycle (Eastman et al., 2011). This process involves documenting, gathering, organising, and updating this...

Created on 16-02-2022

Author: A.Davis (ESR1), A.Elghandour (ESR4)

[Read more →](#)

Blog

Network members activities



We might think we are helping, but [Through Sustainability Lens] we might not!

Posted on 05-10-2021

Countless examples can reflect this title, right? But today, I will write about a story of a woman living i...

Author: A.Elghandour (ESR4)

WORKSHOPS, REFLECTIONS

[Read more →](#)



Kick-off a sense of unity out of us being different!

Posted on 15-07-2021

Together, belonging, a sense of comfort and connection plus an increased sense of responsibili...

Author: A.Elghandour (ESR4)

WORKSHOPS

[Read more →](#)





Mahmoud Alsaeed

B3 - Sheffield School of Architecture (SSoA), University of Sheffield

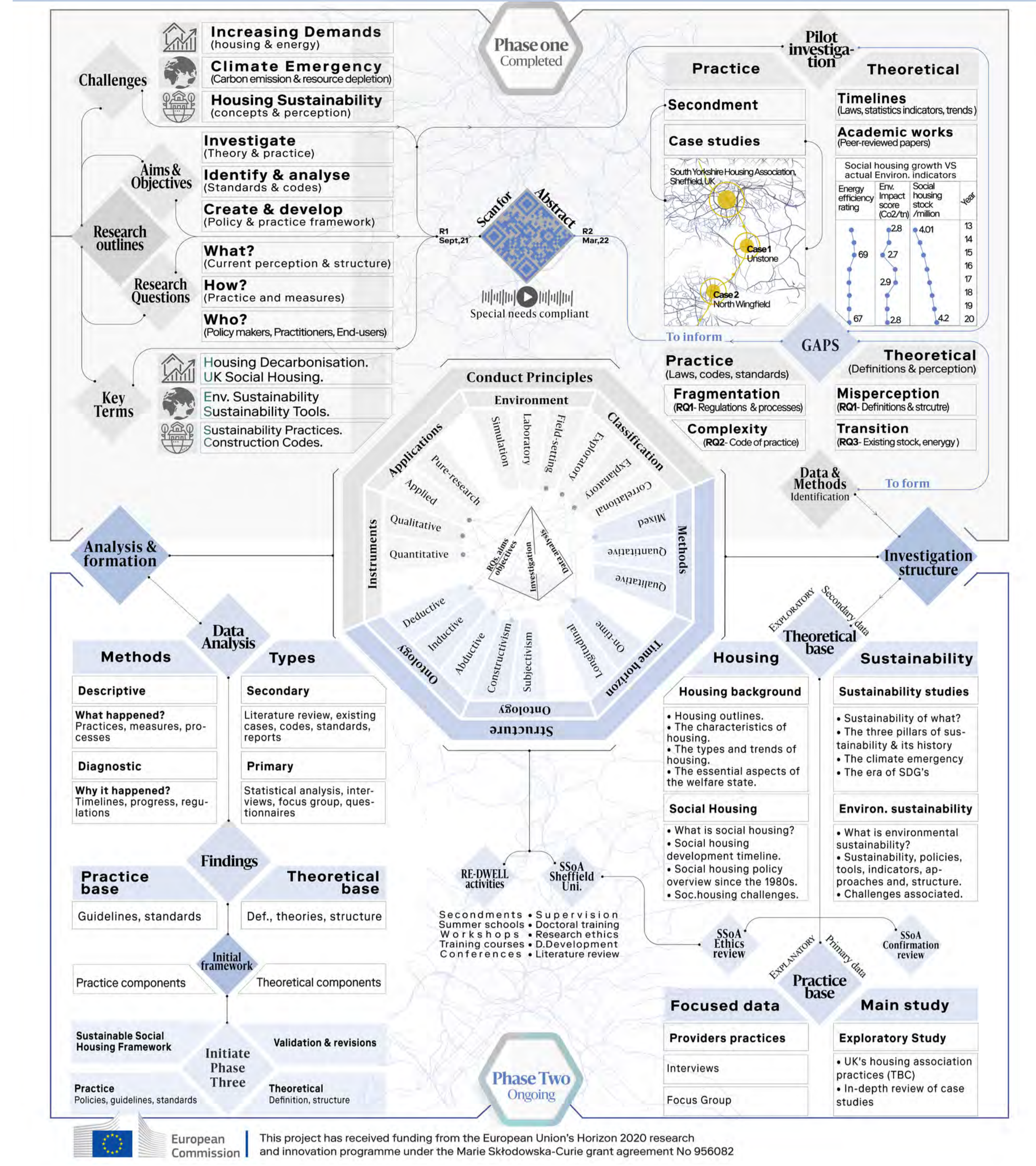
Supervising team

Karim Hadjri (Supervisor)
Krzysztof Nawratek (Co-Supervisor)
Ignacio Guillen (Co-Supervisor)

ESR 5

Environmental sustainability of future social housing

This project challenges existing methodological practices, which the project argues are ineffective due to the practice policy's complexity and fragmentation. The project assesses methodological and practice policy effectiveness in terms of their roles and effect on social housing sustainability in the UK (both retrofit and new construct). The project aims to answer the following questions: (1) what is the current perception and structure of housing and sustainability practices?; (2) how do we define and measure housing sustainability?; (3) what tools can be used to achieve an efficient decarbonised housing sector?; and (4) what should the standards for future homes look like to promote simple and effective practices?.



WORKSHOP LISBON · WORKSHOP LISBON · WORKSHOP LISBON · WORKSHOP LISBON

“Although the workshop was quite motivational, the highlights of the day were the introduction of the concept of BIP/ZIP and the tour to Eco Bairro of Boavista.”

SITE VISITS

“During the tour of one of Casais’s projects, we witnessed the transformation that takes place in construction, from the pencil and block through to the use of BIM and modular design principles.”



Case studies

Library of documented and collaboratively studied cases on affordable and sustainable housing

North Wingfield Road social housing complex.



Vocabulary

Terms and definitions on affordable and sustainable housing

Participatory approaches

Area: Community participation
According to the Oxford English Dictionary, participation is “the act of taking part in an activity or event”. Likewise, it can also mean “the fact of sharing or the act of receiving or having a part of something.” It derives from old French participation which in turn comes from late Latin...

Created on 17-02-2022
Author: M.Alsaeed (ESR5), L.Ricourte (ESR15), A.Pappa (ESR13)

[Read more →](#)

Blog

Network members activities



The case study decoder

Posted on 28-10-2021

Case study analysis. These are the three most confusing words – at least for me. Although being...

Author: M.Alsaeed (ESR5)

[REFLECTIONS](#)

[Read more →](#)



WS1, LIS

WS1: The First Brick Has Been Cast

Posted on 07-10-2021

Finally, it happened! The long-awaited RE-DWELL ITN Lisbon Workshop, organised by ISCTE-UL, took...

Author: M.Alsaeed (ESR5)

[WORKSHOPS](#)

[Read more →](#)



Polyglot researcher

Posted on 30-08-2021

“Clean up concepts, don’t leave them in the soft language of ideology.” François Jullien, 2017 While...

Author: M.Alsaeed (ESR5)

[REFLECTIONS](#)

[Read more →](#)



Well begun is half done!

Posted on 18-07-2021

Once in a blue moon. “RE-DWELL committee has agreed on awarding you ESR position ... March...

Author: M.Alsaeed (ESR5)

[WORKSHOPS](#)

[Read more →](#)





Marko Horvat

B4 - Institute for Social Policy-ISP, University of Zagreb

Supervising team

Gojko Bezovan (Supervisor)

Ivan Rimac (Co-Supervisor)

Gerard van Bortel (Co-Supervisor)

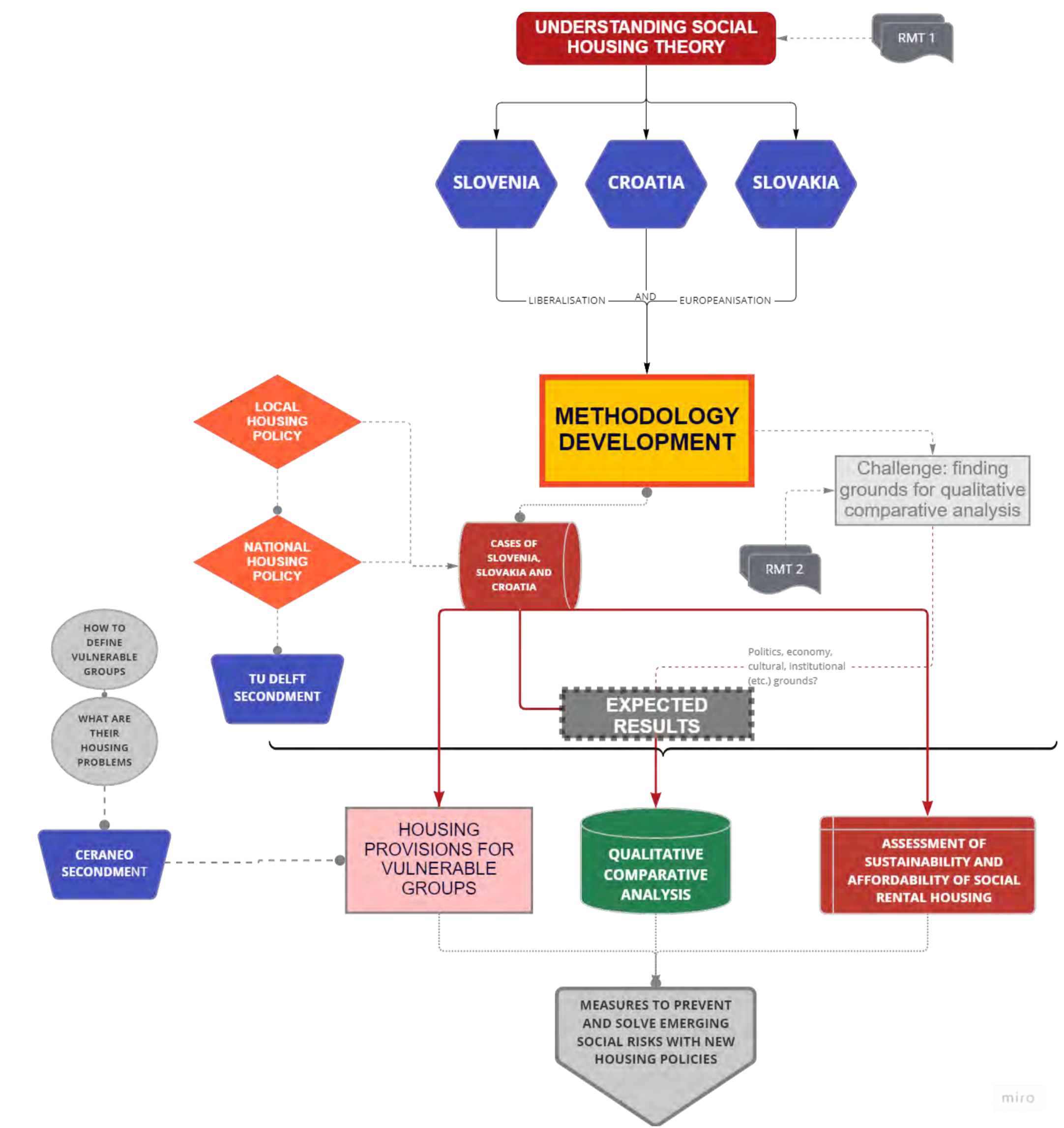
ESR 6

Comparative analysis of social housing policies' modernization impacts in selected post-socialist countries

As cities grow, so does the demand for housing. In the absence of housing policies and regulations, housing markets become speculative and unstable, affecting vulnerable groups in particular. Meeting their housing needs requires coherent and future-proof social policies in many areas of the welfare state.

Slovenia, Croatia and Slovakia have undergone economic and administrative modernisation. Privatisation of the public housing stock has taken place through the mass sale of social housing to sitting tenants, removing social housing systems from the political map and reducing the role of the state in the housing market.

This study compares the development of Slovenian, Croatian and Slovakian housing policies since their modernisation, focusing on social housing and its contribution to affordability for vulnerable groups.



SUMMER SCHOOL NICOSIA · SUMMER SCHOOL NICOSIA · SUMMER SCHOOL NICOSIA · SU

“The week-long activities served to enrich the development of our individual research projects whilst enabling us to build on our connections with fellow Early-Stage Researchers (ESR), the supervising team, and external speakers.”

COLLABORATIVE ACTIVITIES



Case studies

Library of documented and collaboratively studied cases on affordable and sustainable housing

A case study of the Housing Fund of the Republic of Slovenia



Vocabulary

Terms and definitions on affordable and sustainable housing

Housing Governance

Area: Policy and financing

The shift from 'government' to 'governance' has been debated since the early 1970s. Whilst state interventionism had been widely embraced within western societies during the post-war decades, governments gradually moved from exercising constitutional powers to acting as facilitators a...

Created on 16-02-2022

Author: M.Horvat (ESR6), T.Croon (ESR11)

[Read more →](#)

Vocabulary

Terms and definitions on affordable and sustainable housing

Asset-based welfare

Area: Policy and financing

In Europe, increasingly longevity is driving the trend towards an ageing population. Furthermore, at a global level, average life expectancy has increased over the last fifty years from 58.6 years in 1970 to 72.7 years in 2019 (World Bank, 2021), and could reach 76,6 years by 2050...

Created on 03-06-2022

Author: M.Horvat (ESR6)

[Read more →](#)

Blog

Network members activities



Energy efficiency renovation of buildings in Croatia

CONFERENCES, WORKSHOPS

Posted on 24-03-2022

Around 90% of Croatians are homeowners. Homeownership was catalysed by the "give-away"...

Author: M.Horvat (ESR6)

[Read more →](#)



Understanding the differences between architects and the "rest of us"

REFLECTIONS

Posted on 16-12-2021

As a social scientist with a background in economics and environmental science, I have...

Author: M.Horvat (ESR6)

[Read more →](#)



A start of a new chapter in my professional life!

WORKSHOPS

Posted on 14-07-2021

"A journey of a thousand miles begins with a single step". This is a proverb we are all familiar with, but...

Author: M.Horvat (ESR6)

[Read more →](#)





Anna Martin

B5 - Institute for Sociology, Centre for Social Sciences, Hungarian Academy of Sciences Centre of Excellence

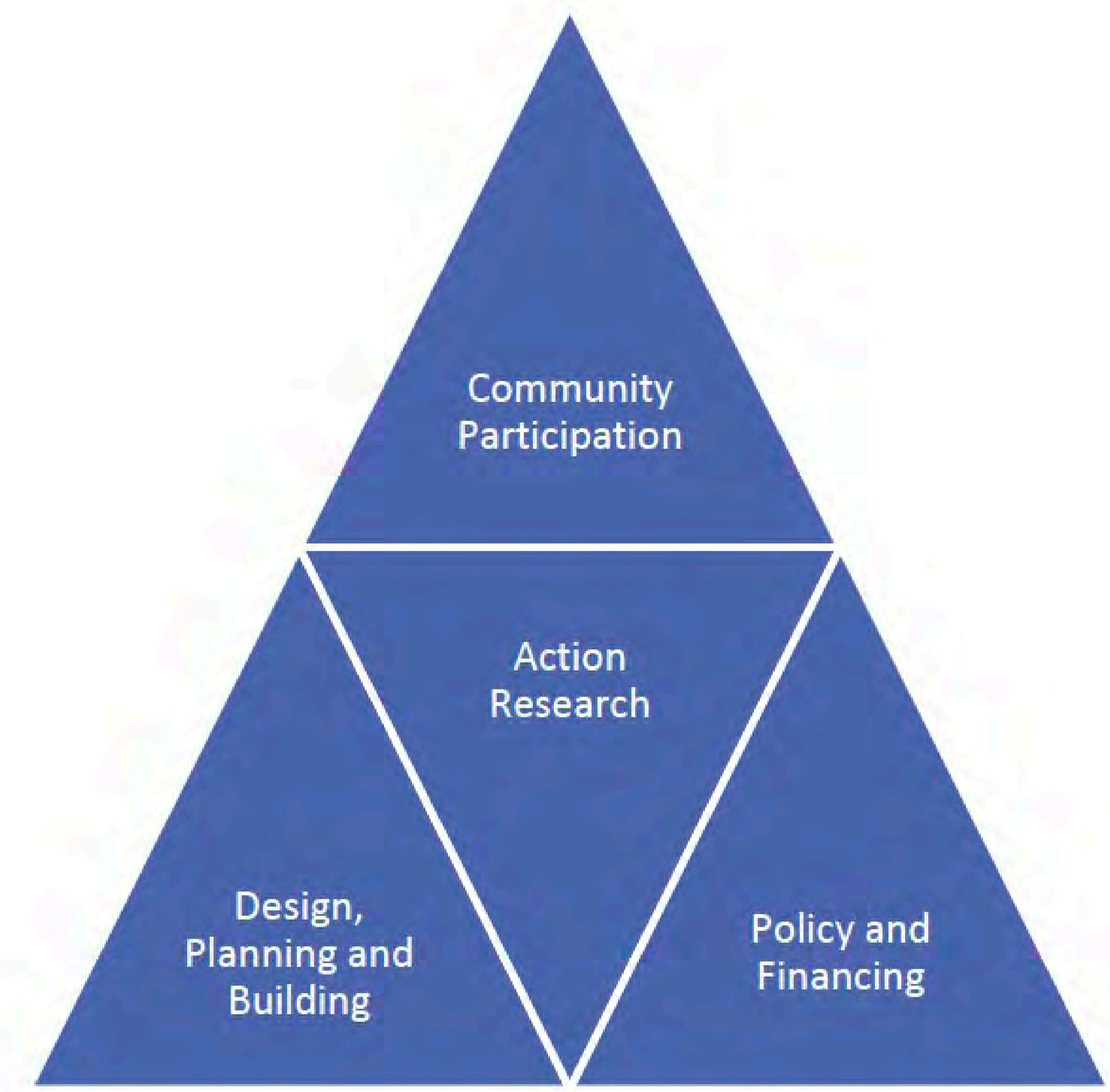
Supervising team

József Hegedüs (Supervisor)
Adriana Diaconu (Co-Supervisor)
Gerard van Bortel (Co-Supervisor)

ESR 7

Housing crisis and its impact on adequate housing - The new housing precariat in Denmark and Hungary

Using the theory of systematically and individually mediated reflexivity this research will demonstrate how individual and structural factors are interlinked and contribute to housing issues together in the context of two countries. The analysis will rehabilitate the juxtapositional approach and describe the contrast and similarities between the Danish and Hungarian housing system with a focus on vulnerable groups. Both countries were affected by the wealth-creating feature of housing as a commodity, that has been reinforced over time, which inevitably made housing costs more expensive. Social and territorial inequalities increased, and a new housing precariat emerged, as the socioeconomic position of the middle class has become unstable. The research will redefine the housing precariat with a mixed research design.



MIMER SCHOOL NICOSIA · SUMMER SCHOOL NICOSIA · SUMMER SCHOOL NICOSIA · SUMMER SCHOOL NICOSIA



GROUP DISCUSSIONS

“This week was therefore not only valuable in terms of workshop activities, but also in understanding the political and social situation there, and how it has manifested in the city masterplan and architecture.”



“Ruonavaara provided a new definition of housing regimes, which combines the elements of previous theories. He defined housing regime as a “set of fundamental principles according to which housing provision operates in some defined area (municipality, region, state) at a particular point in time” (2020a, p. 10)”

Vocabulary

Terms and definitions on affordable and sustainable housing

Housing Regime

Area: Policy and financing

The discussion on housing regimes dates back to a neo-institutional turn in policy research which occurred during the 1980s. This literature viewed institutions not so much as “formal” entities but more as the culmination of conflicting power relations, market dynamics, and ideology. The stud...

Created on 24-02-2022

Author: C.Verrier (ESR3), A.Martin (ESR7)

[Read more →](#)





Andreas Panagidis

B6 - Department of Architecture, University of Cyprus

Supervising team

Nadia Charalambous (Supervisor)

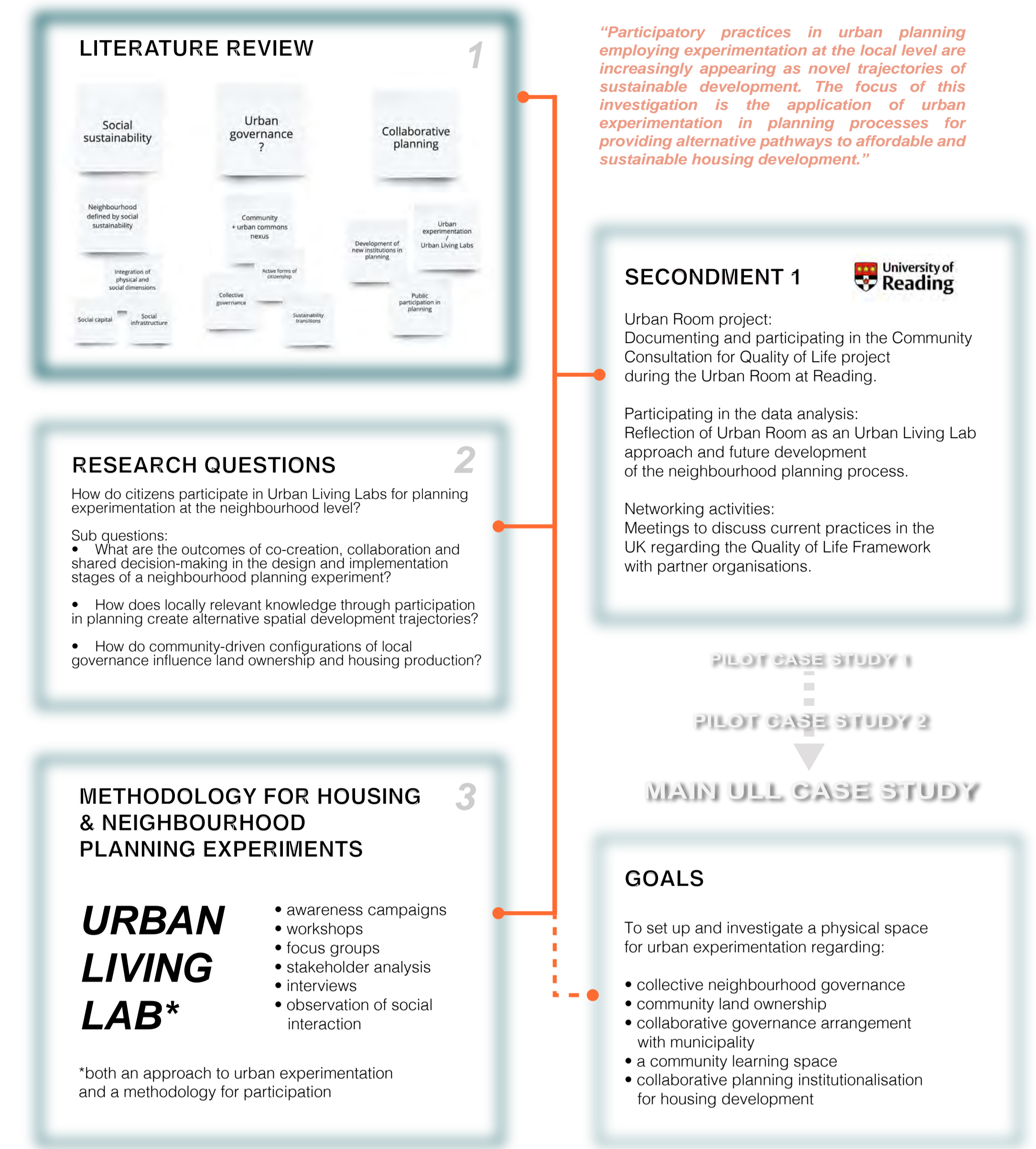
Andreas Savvides (Co-Supervisor)

Gábor Csanádi (Co-Supervisor)

ESR8

Housing as Social Infrastructure: Urban Living Labs for Planning Experimentation at the Neighbourhood Level

A closer investigation of the spatial understanding of social sustainability presents the opportunity for exploring housing as embedded in wider contexts and within community infrastructure, re-establishing the importance of the local scale of the neighbourhood. The interplay of housing and the distribution of public resources as well as growing literature on the urban commons invariably involves the non-individualistic forms of ownership and control of land and experimental urban governance arrangements. I aim to investigate collaborative governance structures and the equitable distribution of urban resources with the aim of developing a conceptual framework that reinforces the under-researched concept of commons planning. Urban experimentation that specifically prioritises the active engagement of citizens will be examined in municipality-citizen partnerships through the set up of Urban Living Labs.



SCHOOL NICOSIA · SUMMER SCHOOL NICOSIA · SUMMER SCHOOL NICOSIA · SUMMER SCHOOL NICOSIA

“As researchers, we do not only perceive reality through various neutral inputs, we actively participate in the construction of our respective objects of study.”

COLLABORATIVE ACTIVITIES



“During my experience of the Urban Room, I found the process of mapping social value combined with face-to-face engagement particularly important tools placed in the hands of citizens as much as experts in understanding and enhancing social value when undertaking processes of community consultation.”

Vocabulary

Terms and definitions on affordable and sustainable housing

Co-creation

Area: Community participation
In a broader sense, co-creation means the joint effort of bringing something new to fruition through acts of collective creativity (Sanders & Stappers, 2008) which can be manifested in both tangible (making something together) or intangible (learning something together) outcomes...

Created on 16-02-2022
Author: A.Panagidis (ESR8), E.Roussou (ESR9)

[Read more →](#)

Vocabulary

Terms and definitions on affordable and sustainable housing

Social sustainability

Area: Community participation
From the three pillars of sustainable development, economic, environmental and social, the latter involving social equity and the sustainability of communities, has been especially neglected. Ongoing problems caused by conflicting economic, environmental and social goals with...

Created on 03-06-2022
Author: A.Panagidis (ESR8)

[Read more →](#)

Blog

Network members activities



Novel approaches to participation in planning

SECONDMENTS

Posted on 11-05-2022

During my recent secondment at the University of Reading, School of Architecture I was lucky enough...

Author: A.Panagidis (ESR8)

[Read more →](#)



Lisbon IRL, Transdisciplinarity is Now Real

WORKSHOPS

Posted on 26-09-2021

It was the first time for all of us. We finally met in real life (IRL) at the Lisbon Workshop. In the three...

Author: A.Panagidis (ESR8)

[Read more →](#)





Effrosyni Roussou

B6 - Department of Architecture, University of Cyprus

Supervising team

Nadia Charalambous (Supervisor)

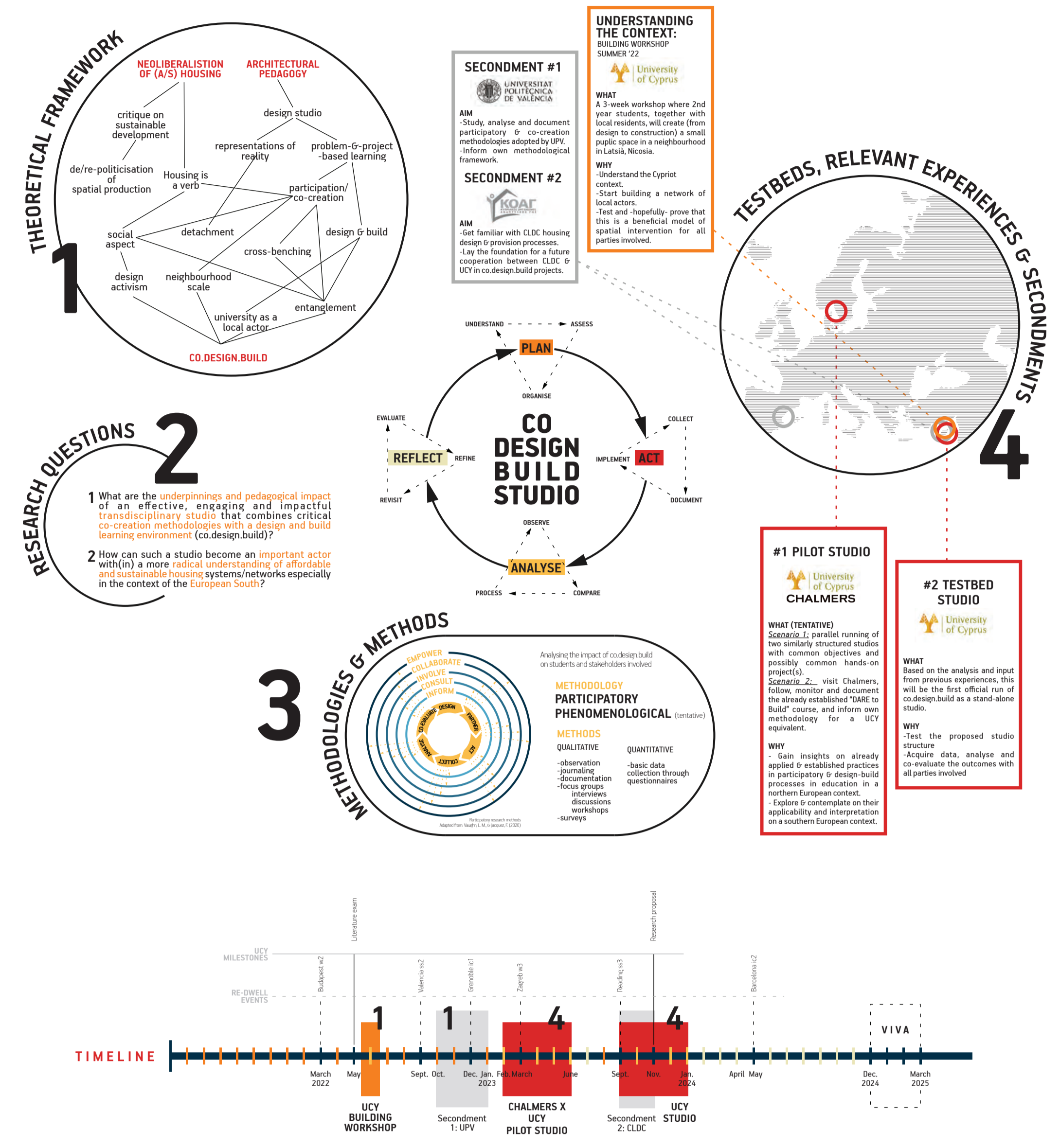
Carla Sentieri (Co-Supervisor)

Andreas Savvides (Co-Supervisor)

ESR 9

From creator to enabler: the underpinnings and implications of the co.design.build studio

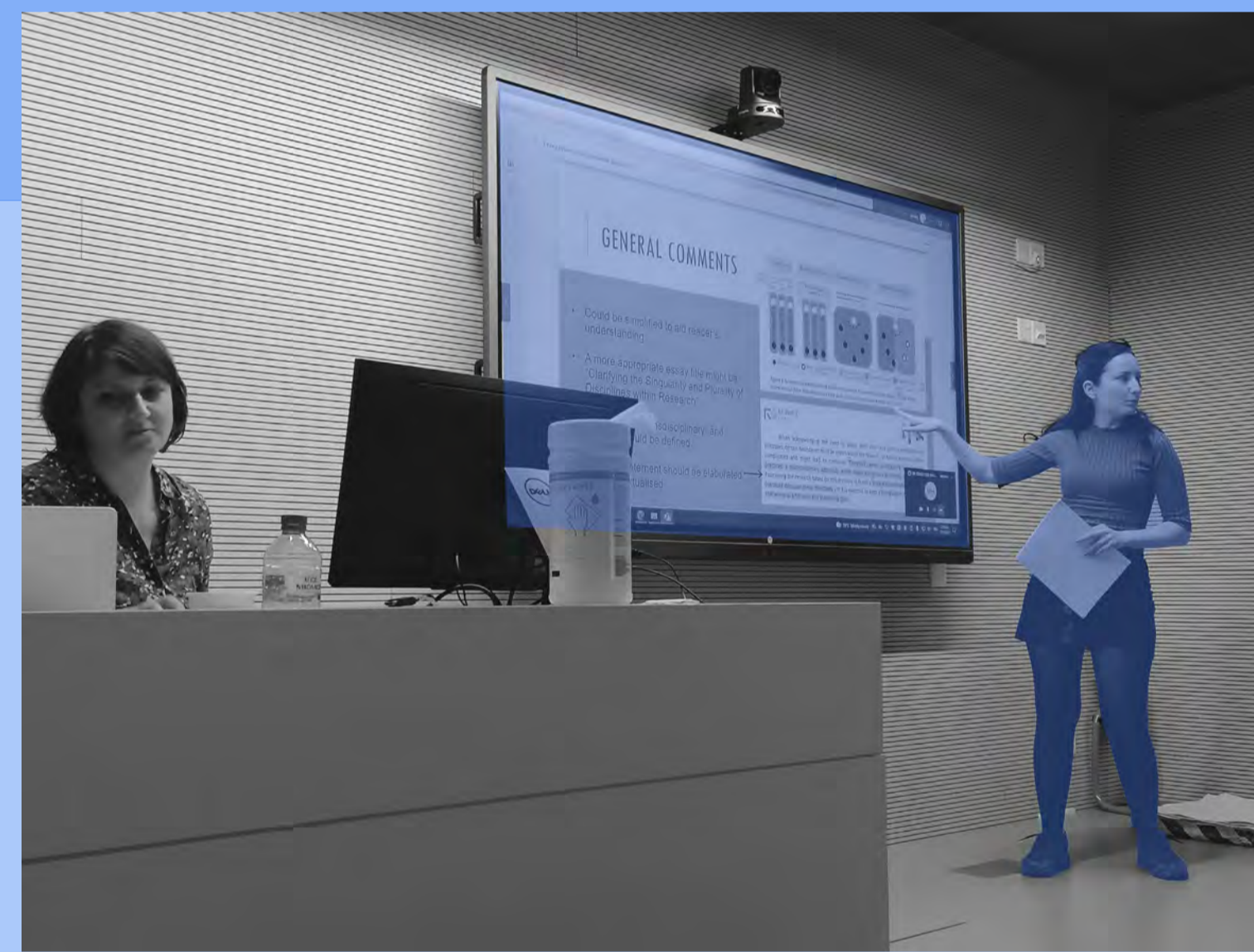
Drawing from the pressing need to reposition architectural education against a harsh neoliberal context which continues to compromise an equitable future, this research aims to explore the underpinnings and pedagogical impact of a transdisciplinary studio that combines critical co-creation methodologies with a design and build learning environment, as well as how can such a studio become an important actor within a more radical understanding of affordable and sustainable housing systems/networks especially in the context of the European South. Through a participatory action research framework, this project aspires to contribute to the ongoing discussion on the opportunities and implications of a politicised “live studio” by creating and testing a pedagogical framework as well as highlight the potential role of architecture schools as active stakeholders within their communities.



NICOSIA · SUMMER SCHOOL NICOSIA · SUMMER SCHOOL NICOSIA · SUMMER SCHOOL NICOSIA

“The summer school ended with the viewing of documentary film ‘Anamones’ followed by a discussion with architect Andri Tsiouti who collaborated on the production of the documentary. The film investigates the sociological impact of designing in starter bars (structural steel rods) protruding from the roofs of homes in Cyprus for “future use”.

LECTURES



“I really look forward to sharing knowledge and learning from everyone and that’s what I’m primarily here to do. I am here to learn, and the truth is I will never stop being “here to learn”.

Vocabulary

Terms and definitions on affordable and sustainable housing

Co-creation

Area: Community participation

In a broader sense, co-creation means the joint effort of bringing something new to fruition through acts of collective creativity (Sanders & Stappers, 2008) which can be manifested in both tangible (making something together) or intangible (learning something together) outcomes...

Created on 16-02-2022

Author: A.Panagidis (ESR8), E.Roussou (ESR9)

[Read more ->](#)

Blog

Network members activities



Kick-off of a new adventure!

Posted on 18-07-2021

So, this is it. I am here, in 40°C Nicosia, and I'm - digitally- surrounded by awesome people who are...

Author: E.Roussou (ESR9)

WORKSHOPS

[Read more ->](#)

